

What exactly is MapTP?

MapTP stands for the Map Transfer Protocol. It allows compression of data and sending of small incremental updates to the requesting client - within milliseconds! MapTP enables the finest mapping applications in distributed environments such as the internet and mobile computing. Whenever and wherever a map display is needed MapTP helps.

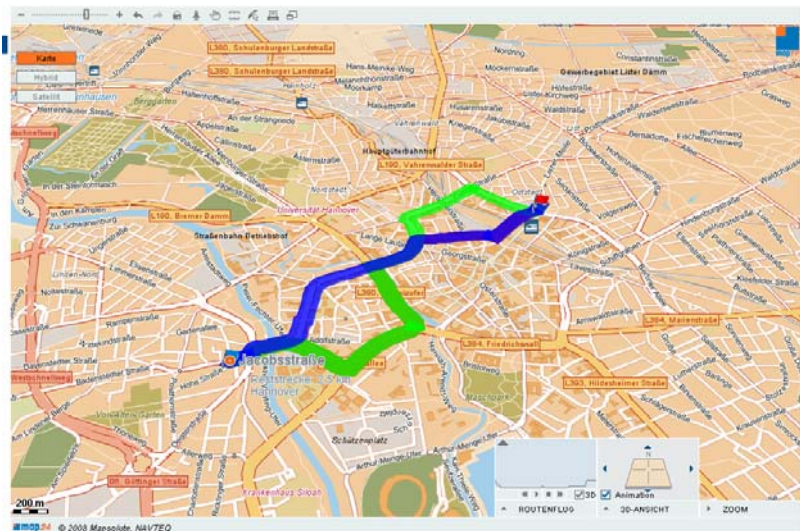
Why is MapTP worldwide unique?

One of the distinctive feature of MapTP is the use of vector-based mapping data, which provides both truly interactive and fast mapping applications. Once transferred, the vector map data remains on the client for the whole session and additional data is incrementally uploaded only when needed. The unique performance and speed are due to the use of an extremely efficient compression format deployed. This makes MapTP the fastest and most flexible mapping application of all kind. It offers more interactivity with its unique vector-based technology and changes the way we use maps!

Learn more at: <http://www.maptp.com>

Who uses MapTP?

The distributed technology supports a wide range of client platforms, web-based applications and mobile devices. MapTP provides developer friendly application programming interfaces (API) for Java and C++ applications, as well as several high-level APIs such as XML/SOAP, AJAX, HTTP, and Active X. The MapTP APIs allows integration of full mapping and routing functionality in clients' applications.



Prominent companies like DaimlerChrysler, Scania, Cannondale are satisfied clients, using this technology successfully for years, offering various geo-spatial services to their valuable customers. Learn more about our references:

http://www.cannondale.com/dealer_locator/

<http://www.rac.co.uk/web/routeplanner/>

<http://products.map24.com/de-de/tracking.html>

Please take a look at our demo of a Fleetmap application with simulated data as an example of how a tracking service can look like with MapTP. Take the small tour: <http://maptp12.map24.com/fleetmap/fleetmap2.html>

How can MapTP support my business?

We are your technology partner in all fields of interactive mapping, providing worldwide map coverage. MapTP gives you the mapping functionality in different fields of application such as fleet management, asset tracking, network management, CRM applications, Internet portals, store and location finders, call centers, marketing tools and many more. NAVTEQ/Mapsolute runs one of the largest map server farms in the world and also offer to host the service.

MapTP offers various geo spatial functionalities such as geocoding services, reverse geocoding, proximity, routing (also matrix or isoline edition) and MGI services.

- MapTP™ Proximity Service (incl. corridor search)
- MapTP™ Routing Service
- MapTP™ Routing Service Matrix Edition
- MapTP™ Routing Service Isoline Edition
- MapTP™ MGI Service (Bitmap rendering)
- MapTP™ Geocoding Service
- MapTP™ Reverse Geocoding Service
- MapTP™ Global Imagery Service (Satellite images)
(will be integrated in MCS services)
- MapTP™ Traffic (planned service)
- MapTP™ Online Advertisement (planned service)



For detailed technical information, demos, tutorials with complete source codes, free downloads and more, please visit our Developer Network: <http://devnet.map24.com>

For further information, please contact Darrell Rhodes, drhodes@tier3-inc.com or at (651) 430-2776