

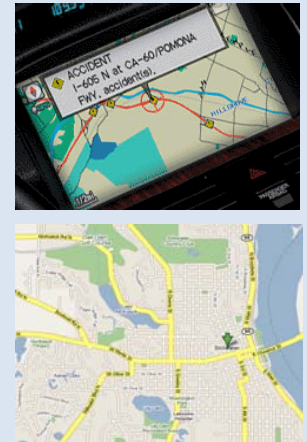
# Value-Added Re-seller of NAVTEQ Data



NAVTEQ DIGITAL MAP DATA OFFERS ACCURACY, DETAIL, RELIABILITY, AND FLEXIBILITY. CONTINUOUSLY UPDATED TO MAINTAIN ITS FRESHNESS AND PRECISION, NAVTEQ DIGITAL MAP DATA NOT ONLY ENABLES DOOR-TO-DOOR ROUTING THROUGHOUT EUROPE AND NORTH AMERICA, IT CONTAINS MILLIONS OF POINTS OF INTEREST (POIs), MAKING IT EASY TO LOCATE EVERYTHING FROM RESTAURANTS TO HOSPITALS AND GAS STATIONS. YOU'LL FIND NAVTEQ DATA ONBOARD MOST NAVIGATION-ENABLED VEHICLES PRODUCED IN NORTH AMERICA AND EUROPE AND ON ALL THE TOP INTERNET NAVIGATION SITES. IT IS THE UNSEEN FORCE BEHIND THE LEADING EXPRESS MAIL SERVICES, EMERGENCY AND GOVERNMENT ROUTING PLANS, EFFICIENT FIELD SERVICE MANAGEMENT, AS WELL AS NUMEROUS FLEET OPERATIONS, WORLDWIDE. PLUS, IT IS THE FOUNDATION FOR A GROWING CATEGORY OF WIRELESS, LOCATION BASED SERVICES (GIS/LBS).

## BENEFITS:

- ✓ POSITIONAL ACCURACY
- ✓ BLOCK LEVEL ADDRESS RANGES
- ✓ EXCELLENT TURN RESTRICTIONS
- ✓ COMPREHENSIVE ROADWAY CONNECTIVITY
- ✓ Z LEVELS (HEIGHT RELATIVE TUNNELS AND BRIDGES)
- ✓ EXIT AND ENTRANCE RAMP INCLUDING SIGNAGE
- ✓ ONE OF THE INDUSTRIES LARGEST POI (POINT-OF-INTEREST) DATABASES



COVERAGE: UNITED STATES, CANADA, AND MEXICO



## NAVTEQ PRODUCTS OFFERED:

### STREET DATA PRODUCTS:

- NAVTEQ PREMIUM - FOR ROUTING APPLICATIONS
- NAVTEQ STANDARD - FOR GEOCODING APPLICATIONS
- NAVTEQ BASE - FOR DISPLAY PURPOSES

\*STREET DATA PRODUCTS NOW INCLUDE ZIP CODE BOUNDARIES, ZIP +4 CENTROIDS, AND CENSUS DATA



### PARCEL BOUNDARIES:

ASSIMILATED AND STANDARDIZED PARCEL BOUNDARIES FROM INDIVIDUAL PARCEL COLLECTION UNITS FOR VISUAL ENHANCEMENT AND USE IN GIS APPLICATIONS. A PARCEL IS A LAND RECORD THAT DEFINES THE BOUNDARY OF A PIECE OF LAND. IT IS OFTEN THE BASIC ADMINISTRATIVE UNIT OF LOCAL GOVERNMENT.



### ENHANCED DATA LAYERS

- AREA CODE BOUNDARIES – POLYGONS REPRESENTING THE GEOGRAPHIC AREA COVERED BY U.S. AREA CODES
- CENTRAL OFFICE LOCATIONS – POINTS REPRESENTING THE MAIN OFFICE OF THE LOCAL EXCHANGE CARRIER
- LATA BOUNDARIES – POLYGONS REPRESENTING THE 3-DIGIT LOCAL ACCESS AND TRANSPORT AREAS
- METRO FIBER LINES – LINES REPRESENTING THE FIBER OPTIC NETWORK MAP
- FIBER LIT BUILDING - POINT LOCATIONS REPRESENTING THE BUILDINGS THAT ARE WIRED OR "LIT" WITH FIBER OPTICS AND CAN BE LAYERED OVER THE NAVTEQ MAP DATA FOR ENHANCED STUDY
- WIRE CENTER BOUNDARIES – POLYGONS REPRESENTING WIRE CENTERS – BASIC UNIT OF GEOGRAPHY FOR THE TELECOM INDUSTRY
- RATE CENTER BOUNDARIES – POLYGON COVERING A GEOGRAPHIC AREA THAT HAS BEEN ASSIGNED TO A LOCAL EXCHANGE CARRIER FOR ITS PROVISION OF EXCHANGE SERVICES
- TRAFFIC PATTERNS – DATABASE OF AVERAGE TRAFFIC FLOW VELOCITY FOR SPECIFIC SECTIONS OF ROAD
- TRAFFIC - PROVIDES REAL-TIME, CONTINUOUSLY STREAMED INFORMATION ABOUT TRAFFIC CONDITIONS ON MAJOR ROAD NETWORKS
- TRANSPORT - INCLUDES TRUCK-SPECIFIC ROAD ATTRIBUTES REPRESENTED BY PHYSICAL RESTRICTIONS AND LEGAL GUIDELINES. THESE CAN BE USED IN TRUCK NAVIGATION, STRATEGIC OPTIMIZATION, ROUTING AND DISPATCHING
- POINT ADDRESSES - ENHANCES THE ACCURACY OF DESTINATION SELECTION AND PRECISION OF "TO THE DOOR" ARRIVAL BY PROVIDING POINTS ADJUSTED TO THE ROAD FOR ADDRESS LOCATIONS

WWW.TIER3-INC.COM

1 (877) TIER3-01

106 E. Chestnut Street  
Stillwater, MN 55082

THESE PRODUCTS PROVIDE YOU WITH A VARIETY OF ATTRIBUTES FROM STREET DATA, ADDRESS RANGES, POINTS OF INTEREST AND ROUTING FILES TO PROVIDE YOU WITH THE BEST DATA FOR YOUR APPLICATION.